

WEST VILLAGE *Atlanta*

A joint venture between The Highlands Companies, The Pacific Group and Branch Properties is developing West Village, a new mixed-use development situated on 50 acres near Interstate 285 and Atlanta Road in Atlanta's Vinings submarket. Each company is developing specific components of the \$300 million project, which is one of the largest live/work/play developments underway in the metro Atlanta area.

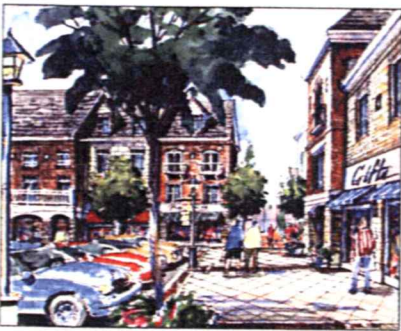


West Village is being developed in the Vinings submarket of Atlanta near Interstate 285 and Atlanta Road.

"West Village has enough critical mass to create a new neighborhood that will integrate into the city and community fabric," states Chris Cassidy, president of The Highlands Companies. "It touches every housing option at multiple price points, and it provides a true live/work/play environment."

The Highlands Companies is developing 292 for-lease condominiums including 20 for-lease townhomes. These leased condos feature 10-foot ceilings, covered balconies and hardwood flooring in living areas. The Pacific Group is developing the for-sale component of the residential units, which features 120 stacked flats and 115 townhomes. In addition, Branch Properties is developing 62,500 square feet of retail as well as three outparcels that will be utilized for restaurants and other uses. A future site along I-285 will include two mid-rise residential buildings with 402 for-sale units.

"Each enclave in the community will have its own pool and community center, and the apartments also will include a wine bar and fitness center for residents," explains Cassidy, speaking of the amenities that West Village offers.



Another rendering of West Village.

"Overall, with its retail, residential and restaurants, the development fills the gap in this market as far as providing a sense of place."

West Village is marked by extensive green space, and the community will include a designated path for the extension of the Silver Comet Trail, a town square retail setting with fountains, green space and extensive landscaping, and seven of the development's 50 acres have been designated for ancillary open/green space and pocket parks.